

Bossa/Latin

NEW DAY

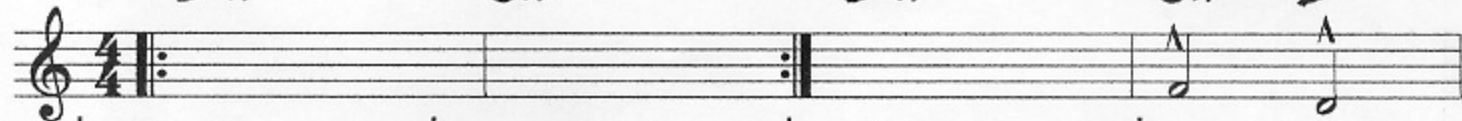
McNulty/Bollenback

3x $E\flat m^9$

Cm^{11}

4th x $E\flat m^9$

Cm^{11} $B7(\#9)$

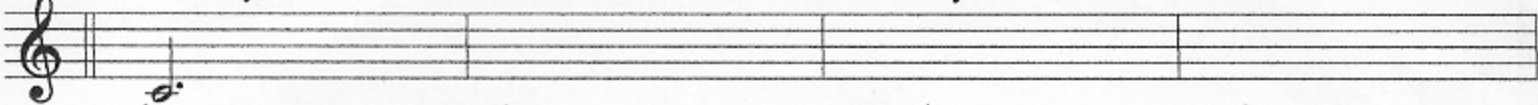


A $B\flat maj^9$

$B\flat m^7$

$B\flat maj^7$

$B\flat m^7$

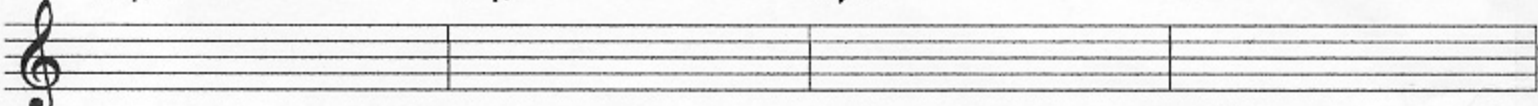


$C\sharp m^7$

$F\sharp 13$

$Gm^7(b5)$

$C7(b9)$

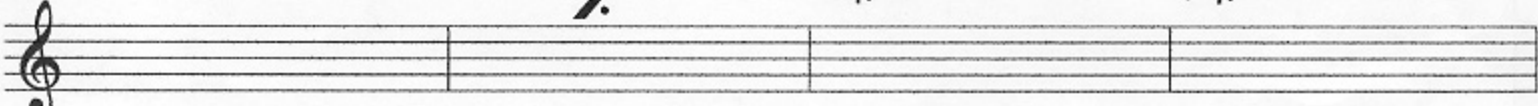


Fm^7

/

$C\sharp m^7$

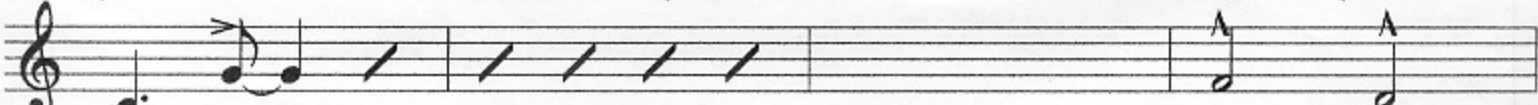
$F\sharp 13$



Am^{11}

Bm^{11} Cm^9

Cm^9 $B7(\#9)$

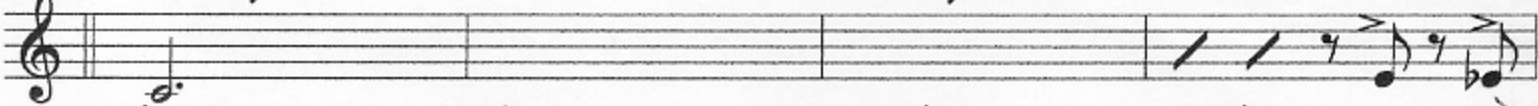


B $B\flat maj^9$

$B\flat m^7$

$B\flat maj^7$

$B\flat m^7$ Dm^9 $C\sharp m^9$

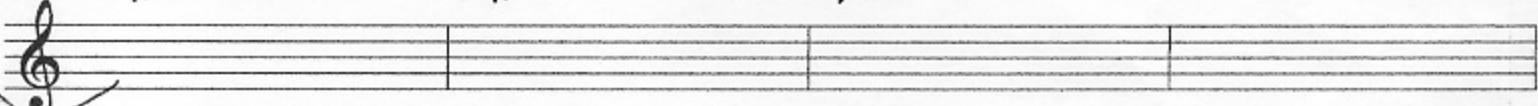


$C\sharp m^7$

$F\sharp 13$

$Gm^7(b5)$

$C7(b9)$



Fm^7

Dm^9

$E\flat m^9$ Dm^9 $C\sharp m^7$

$F\sharp 13$



Am^{11}

Bm^7

Cm^7

$C\sharp m^7$ $G13$ $B\flat m^7/A\flat$

